

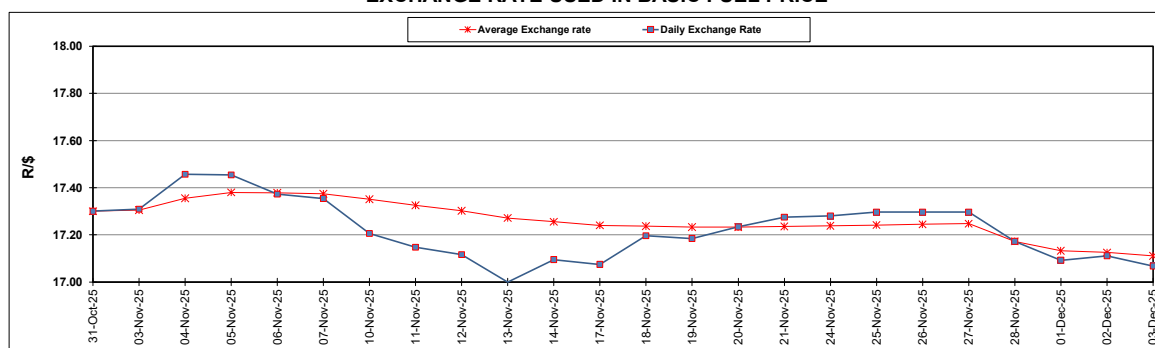
South African Cents per Litre (SA c/l)	PETROL 95 ULP	PETROL 93 ULP & LRP	DIESEL 0.05%	DIESEL 0.005%	ILL. PAR.
GAUTENG PUMP PRICE AS FROM 03/12/2025	2,141.000	2,126.000	-	-	-
WHOLESALE PRICE AS FROM 03/12/2025	-	-	1,978.830	2,002.230	1,373.098
SINGLE NATIONAL MAXIMUM RETAIL PRICE AS FROM 03/12/2025	-	-	-	-	1,746.000
BASIC FUEL PRICE - 03/12/2025	967.264	957.987	1,004.788	1,018.271	1,021.182
PRESS RELEASE CONTRIBUTION TO BFP 03/12/2025 - 03/12/2025	977.170	962.170	1,109.630	1,133.030	1,103.128
UNIT OVER/(UNDER) RECOVERY - 03/12/2025	9.906	4.183	104.842	114.759	81.946
AVERAGE BASIC FUEL PRICE 28/11/2025 - 03/12/2025	987.430	971.763	1,030.755	1,046.714	1,039.246
AVERAGE UNIT OVER/(UNDER) RECOVERY 28/11/2025 - 03/12/2025	(29.310)	(28.643)	33.875	28.566	12.132

### ANALYSIS MOVEMENT OF AVERAGE OVER/(UNDER) RECOVERY

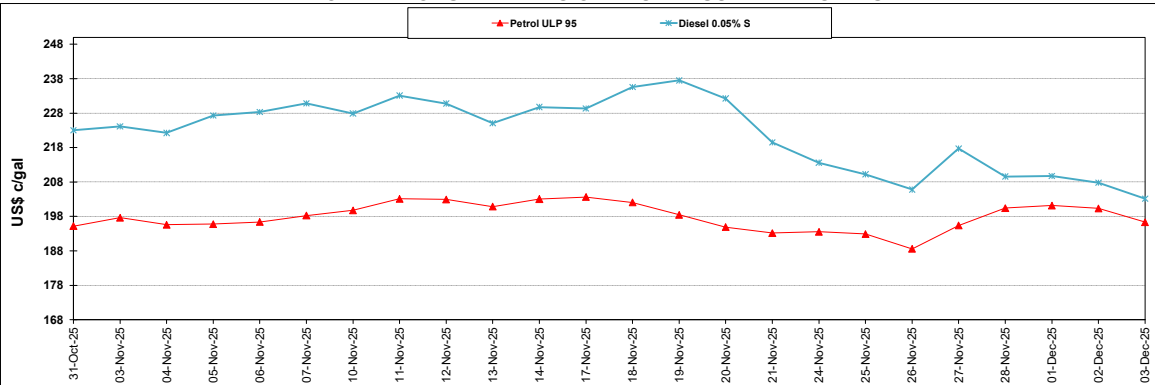
	PETROL 95	PETROL 93	DIESEL 0.05%	DIESEL 0.005%	ILL. PAR.
- MOVEMENT IN INTERNATIONAL PRODUCT PRICES	(36.420)	(35.640)	26.454	21.030	4.649
- MOVEMENT IN EXCHANGE RATE	7.110	6.997	7.421	7.536	7.483
AVERAGE UNIT OVER/(UNDER) RECOVERY 28/11/2025 - 03/12/2025	(29.310)	(28.643)	33.875	28.566	12.132

### R/\$ EXCHANGE RATE - (R/\$17.0680 - 03/12/2025)

#### EXCHANGE RATE USED IN BASIC FUEL PRICE



#### INTERNATIONAL PRODUCT PRICES OF BASKET USED IN BASIC FUEL PRICE



#### BASIC FUEL PRICE IN SA CENTS PER LITRE

