

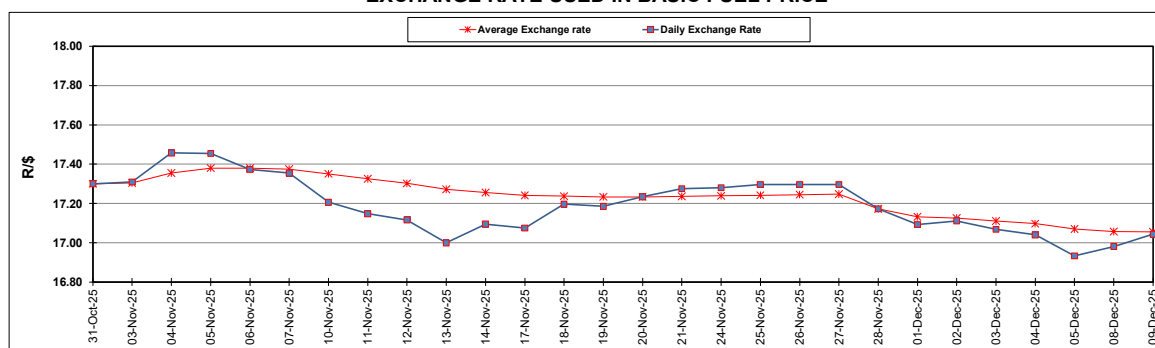
South African Cents per Litre (SA c/l)	PETROL 95 ULP	PETROL 93 ULP & LRP	DIESEL 0.05%	DIESEL 0.005%	ILL. PAR.
GAUTENG PUMP PRICE AS FROM 03/12/2025	2,141.000	2,126.000	-	-	-
WHOLESALE PRICE AS FROM 03/12/2025	-	-	1,978.830	2,002.230	1,373.098
SINGLE NATIONAL MAXIMUM RETAIL PRICE AS FROM 03/12/2025	-	-	-	-	1,746.000
BASIC FUEL PRICE - 09/12/2025	947.595	934.528	992.143	1,001.404	1,016.449
PRESS RELEASE CONTRIBUTION TO BFP 03/12/2025 - 09/12/2025	977.170	962.170	1,109.630	1,133.030	1,103.128
UNIT OVER/(UNDER) RECOVERY - 09/12/2025	29.575	27.642	117.487	131.626	86.679
AVERAGE BASIC FUEL PRICE 28/11/2025 - 09/12/2025	969.715	956.708	1,017.224	1,030.850	1,031.273
AVERAGE UNIT OVER/(UNDER) RECOVERY 28/11/2025 - 09/12/2025	(2.070)	(4.063)	69.906	73.305	45.980

ANALYSIS MOVEMENT OF AVERAGE OVER/(UNDER) RECOVERY

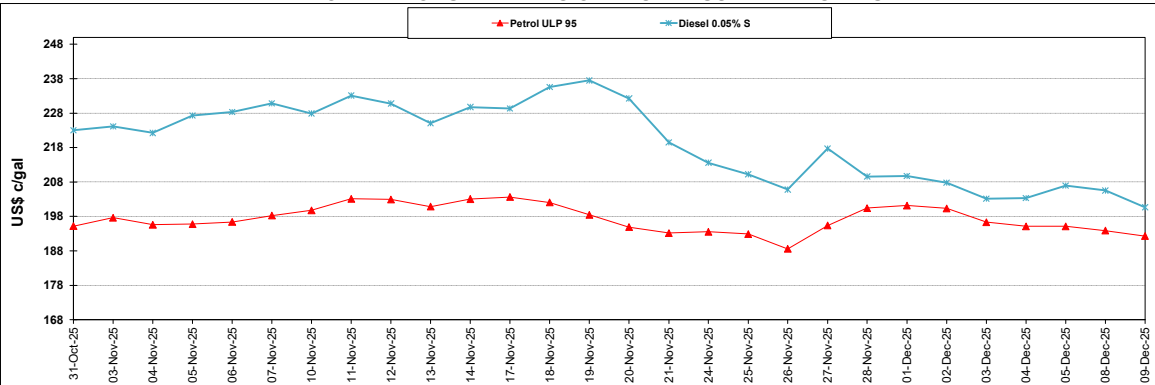
	PETROL 95	PETROL 93	DIESEL 0.05%	DIESEL 0.005%	ILL. PAR.
- MOVEMENT IN INTERNATIONAL PRODUCT PRICES	(12.253)	(14.110)	59.224	62.480	35.150
- MOVEMENT IN EXCHANGE RATE	10.183	10.047	10.682	10.825	10.830
AVERAGE UNIT OVER/(UNDER) RECOVERY 28/11/2025 - 09/12/2025	(2.070)	(4.063)	69.906	73.305	45.980

R/\$ EXCHANGE RATE - (R/\$17.0430 - 09/12/2025)

EXCHANGE RATE USED IN BASIC FUEL PRICE



INTERNATIONAL PRODUCT PRICES OF BASKET USED IN BASIC FUEL PRICE



BASIC FUEL PRICE IN SA CENTS PER LITRE

