

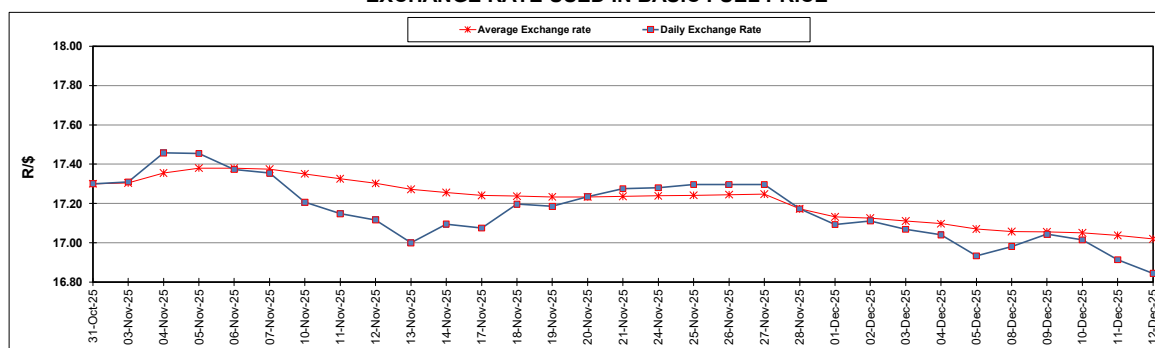
South African Cents per Litre (SA c/l)	PETROL 95 ULP	PETROL 93 ULP & LRP	DIESEL 0.05%	DIESEL 0.005%	ILL. PAR.
GAUTENG PUMP PRICE AS FROM 03/12/2025	2,141.000	2,126.000	-	-	-
WHOLESALE PRICE AS FROM 03/12/2025	-	-	1,978.830	2,002.230	1,373.098
SINGLE NATIONAL MAXIMUM RETAIL PRICE AS FROM 03/12/2025	-	-	-	-	1,746.000
BASIC FUEL PRICE - 12/12/2025	916.219	904.581	961.397	966.077	984.200
PRESS RELEASE CONTRIBUTION TO BFP 03/12/2025 - 12/12/2025	977.170	962.170	1,109.630	1,133.030	1,103.128
UNIT OVER/(UNDER) RECOVERY - 12/12/2025	60.951	57.589	148.233	166.953	118.928
AVERAGE BASIC FUEL PRICE 28/11/2025 - 12/12/2025	958.602	945.583	1,005.018	1,016.599	1,021.551
AVERAGE UNIT OVER/(UNDER) RECOVERY 28/11/2025 - 12/12/2025	11.641	9.660	88.248	95.431	62.759

ANALYSIS MOVEMENT OF AVERAGE OVER/(UNDER) RECOVERY

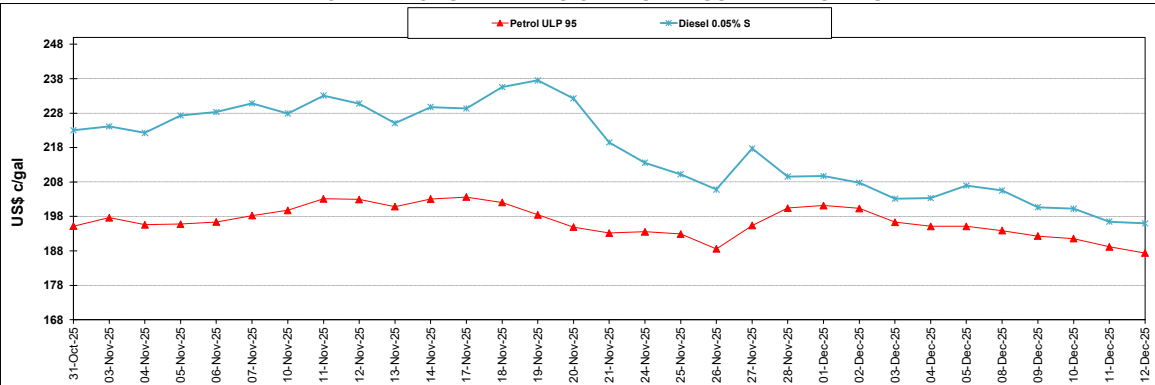
	PETROL 95	PETROL 93	DIESEL 0.05%	DIESEL 0.005%	ILL. PAR.
- MOVEMENT IN INTERNATIONAL PRODUCT PRICES	(0.463)	(2.280)	75.558	82.595	49.860
- MOVEMENT IN EXCHANGE RATE	12.104	11.940	12.690	12.836	12.899
AVERAGE UNIT OVER/(UNDER) RECOVERY 28/11/2025 - 12/12/2025	11.641	9.660	88.248	95.431	62.759

R/\$ EXCHANGE RATE - (R/\$16.8443 - 12/12/2025)

EXCHANGE RATE USED IN BASIC FUEL PRICE



INTERNATIONAL PRODUCT PRICES OF BASKET USED IN BASIC FUEL PRICE



BASIC FUEL PRICE IN SA CENTS PER LITRE

