

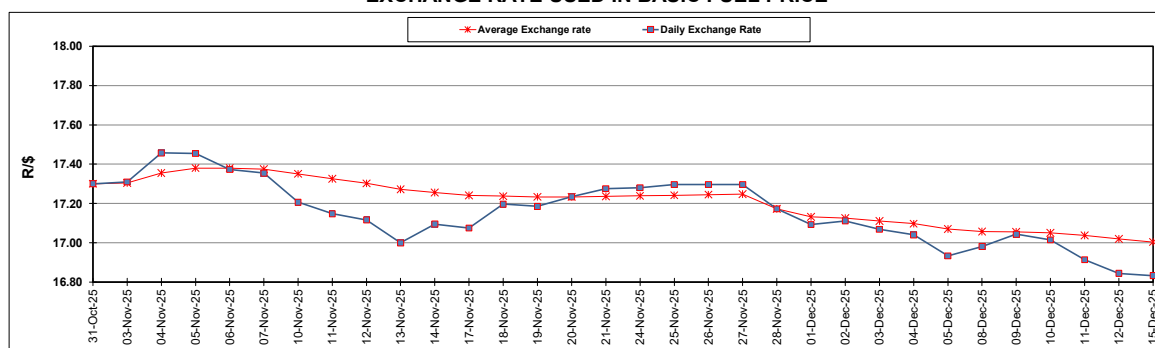
South African Cents per Litre (SA c/l)	PETROL 95 ULP	PETROL 93 ULP & LRP	DIESEL 0.05%	DIESEL 0.005%	ILL. PAR.
GAUTENG PUMP PRICE AS FROM 03/12/2025	2,141.000	2,126.000	-	-	-
WHOLESALE PRICE AS FROM 03/12/2025	-	-	1,978.830	2,002.230	1,373.098
SINGLE NATIONAL MAXIMUM RETAIL PRICE AS FROM 03/12/2025	-	-	-	-	1,746.000
BASIC FUEL PRICE - 15/12/2025	900.695	892.957	953.160	957.512	970.040
PRESS RELEASE CONTRIBUTION TO BFP 03/12/2025 - 15/12/2025	977.170	962.170	1,109.630	1,133.030	1,103.128
UNIT OVER/(UNDER) RECOVERY - 15/12/2025	76.475	69.213	156.470	175.518	133.088
AVERAGE BASIC FUEL PRICE 28/11/2025 - 15/12/2025	953.777	941.197	1,000.697	1,011.675	1,017.259
AVERAGE UNIT OVER/(UNDER) RECOVERY 28/11/2025 - 15/12/2025	17.043	14.623	93.933	102.105	68.619

ANALYSIS MOVEMENT OF AVERAGE OVER/(UNDER) RECOVERY

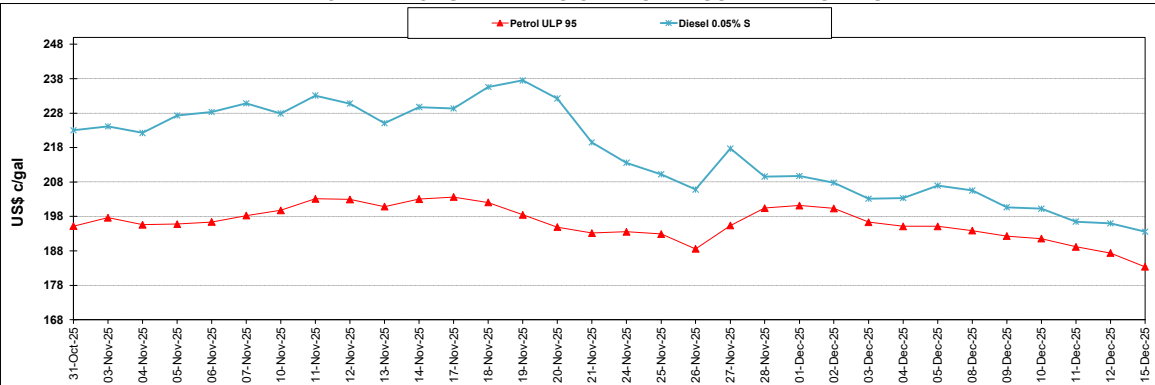
	PETROL 95	PETROL 93	DIESEL 0.05%	DIESEL 0.005%	ILL. PAR.
- MOVEMENT IN INTERNATIONAL PRODUCT PRICES	4.119	1.870	80.374	88.397	54.835
- MOVEMENT IN EXCHANGE RATE	12.924	12.753	13.559	13.708	13.784
AVERAGE UNIT OVER/(UNDER) RECOVERY 28/11/2025 - 15/12/2025	17.043	14.623	93.933	102.105	68.619

R/\$ EXCHANGE RATE - (R/\$16.8325 - 15/12/2025)

EXCHANGE RATE USED IN BASIC FUEL PRICE



INTERNATIONAL PRODUCT PRICES OF BASKET USED IN BASIC FUEL PRICE



BASIC FUEL PRICE IN SA CENTS PER LITRE

