

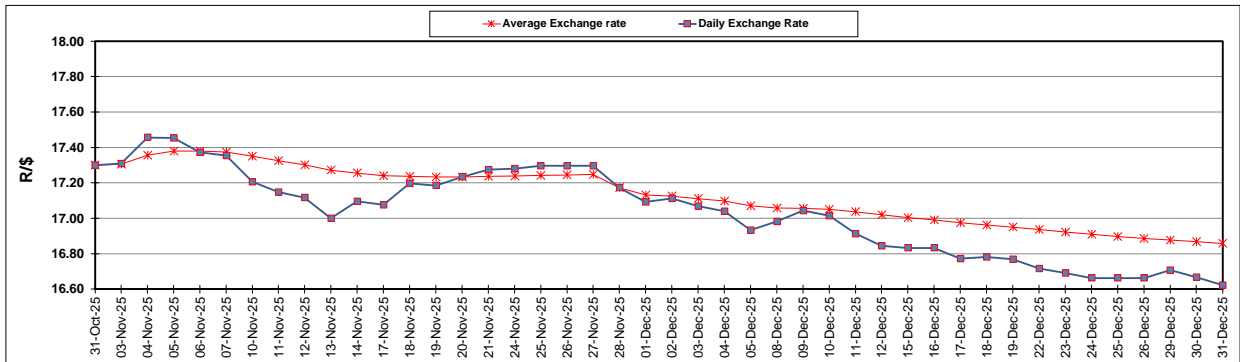
| South African Cents per Litre (SA c/l) | PETROL 95 ULP | PETROL 93 ULP & LRP | DIESEL 0.05% | DIESEL 0.005% | ILL. PAR. |
|--|---------------|---------------------|--------------|---------------|-----------|
| GAUTENG PUMP PRICE AS FROM 03/12/2025 | 2,141.000 | 2,126.000 | - | - | - |
| WHOLESALE PRICE AS FROM 03/12/2025 | - | - | 1,978.830 | 2,002.230 | 1,373.098 |
| SINGLE NATIONAL MAXIMUM RETAIL PRICE AS FROM 03/12/2025 | - | - | - | - | 1,746.000 |
| BASIC FUEL PRICE - 31/12/2025 | 859.007 | 844.566 | 929.355 | 934.594 | 945.859 |
| PRESS RELEASE CONTRIBUTION TO BFP 03/12/2025 - 31/12/2025 | 977.170 | 962.170 | 1,109.630 | 1,133.030 | 1,103.128 |
| UNIT OVER/(UNDER) RECOVERY - 31/12/2025 | 118.163 | 117.604 | 180.275 | 198.436 | 157.269 |
| AVERAGE BASIC FUEL PRICE 28/11/2025 - 31/12/2025 | 910.434 | 899.605 | 967.427 | 976.258 | 986.032 |
| AVERAGE UNIT OVER/(UNDER) RECOVERY 28/11/2025 - 31/12/2025 | 63.561 | 59.390 | 134.703 | 147.147 | 108.471 |

ANALYSIS MOVEMENT OF AVERAGE OVER/(UNDER) RECOVERY

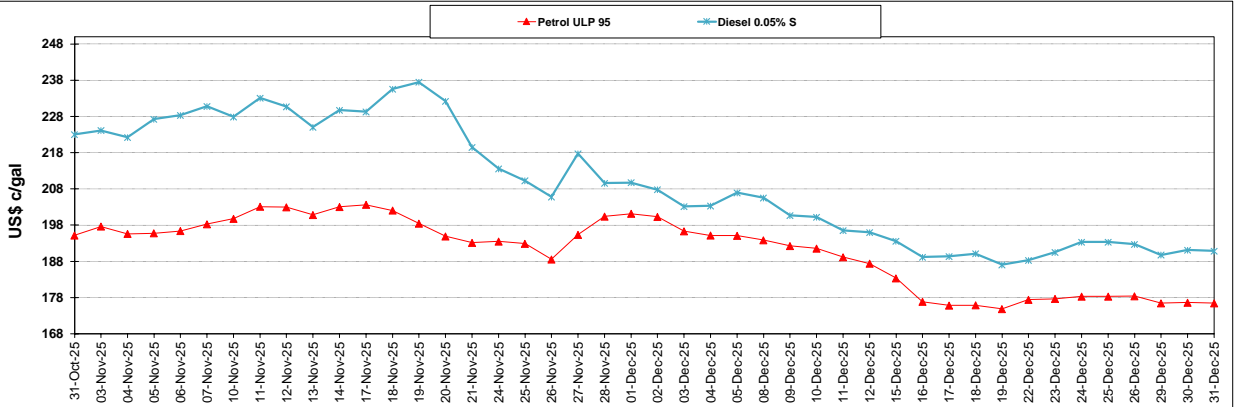
| | PETROL 95 | PETROL 93 | DIESEL 0.05% | DIESEL 0.005% | ILL. PAR. |
|--|-----------|-----------|--------------|---------------|-----------|
| - MOVEMENT IN INTERNATIONAL PRODUCT PRICES | 43.233 | 39.304 | 113.102 | 125.349 | 86.455 |
| - MOVEMENT IN EXCHANGE RATE | 20.328 | 20.086 | 21.601 | 21.798 | 22.016 |
| AVERAGE UNIT OVER/(UNDER) RECOVERY 28/11/2025 - 31/12/2025 | 63.561 | 59.390 | 134.703 | 147.147 | 108.471 |

R/\$ EXCHANGE RATE - (R/\$16.6223 - 31/12/2025)

EXCHANGE RATE USED IN BASIC FUEL PRICE



INTERNATIONAL PRODUCT PRICES OF BASKET USED IN BASIC FUEL PRICE



BASIC FUEL PRICE IN SA CENTS PER LITRE

