

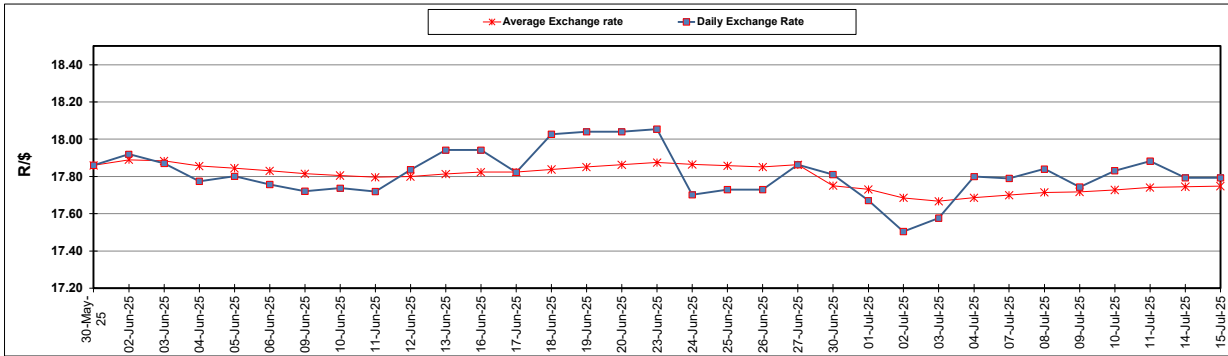
South African Cents per Litre (SA c/l)	PETROL 95 ULP	PETROL 93 ULP & LRP	DIESEL 0.05%	DIESEL 0.005%	ILL. PAR.
GAUTENG PUMP PRICE AS FROM 02/07/2025	2,187.000	2,179.000	-	-	-
WHOLESALE PRICE AS FROM 02/07/2025	-	-	1,935.350	1,940.750	1,315.618
SINGLE NATIONAL MAXIMUM RETAIL PRICE AS FROM 02/07/2025	-	-	-	-	1,669.000
BASIC FUEL PRICE - 15/07/2025	1,000.961	988.285	1,127.731	1,132.170	1,075.504
PRESS RELEASE CONTRIBUTION TO BFP 02/07/2025 - 15/07/2025	1,032.870	1,024.870	1,071.630	1,077.030	1,051.128
UNIT OVER/(UNDER) RECOVERY - 15/07/2025	31.909	36.585	(56.101)	(55.140)	(24.376)
AVERAGE BASIC FUEL PRICE 27/06/2025 - 15/07/2025	999.550	987.042	1,115.076	1,119.302	1,061.574
AVERAGE UNIT OVER/(UNDER) RECOVERY 27/06/2025 - 15/07/2025	21.320	25.136	(62.369)	(61.657)	(25.908)

### ANALYSIS MOVEMENT OF AVERAGE OVER/(UNDER) RECOVERY

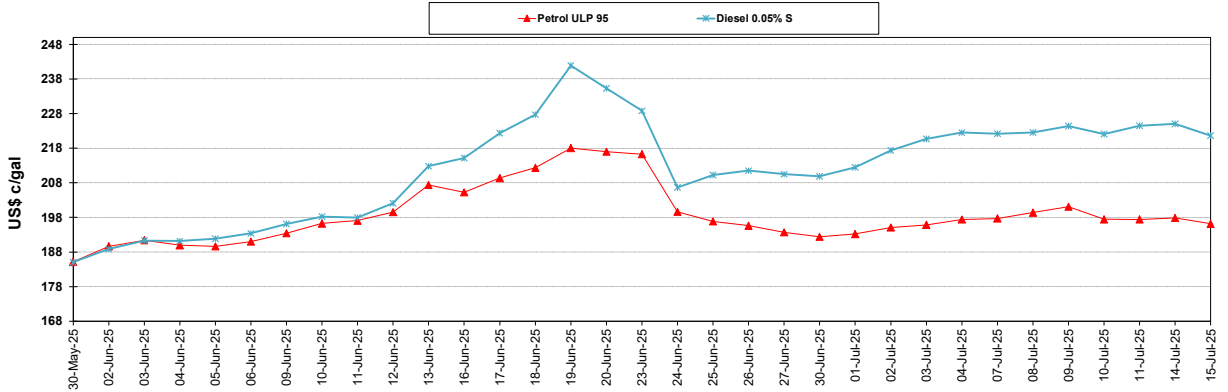
	PETROL 95	PETROL 93	DIESEL 0.05%	DIESEL 0.005%	ILL. PAR.
- MOVEMENT IN INTERNATIONAL PRODUCT PRICES	15.721	19.607	(68.615)	(67.927)	(31.855)
- MOVEMENT IN EXCHANGE RATE	5.599	5.529	6.246	6.270	5.947
AVERAGE UNIT OVER/(UNDER) RECOVERY 27/06/2025 - 15/07/2025	21.320	25.136	(62.369)	(61.657)	(25.908)

R/\$ EXCHANGE RATE - (R/\$17.7925 - 15/07/2025)

### EXCHANGE RATE USED IN BASIC FUEL PRICE



### INTERNATIONAL PRODUCT PRICES OF BASKET USED IN BASIC FUEL PRICE



### BASIC FUEL PRICE IN SA CENTS PER LITRE

