

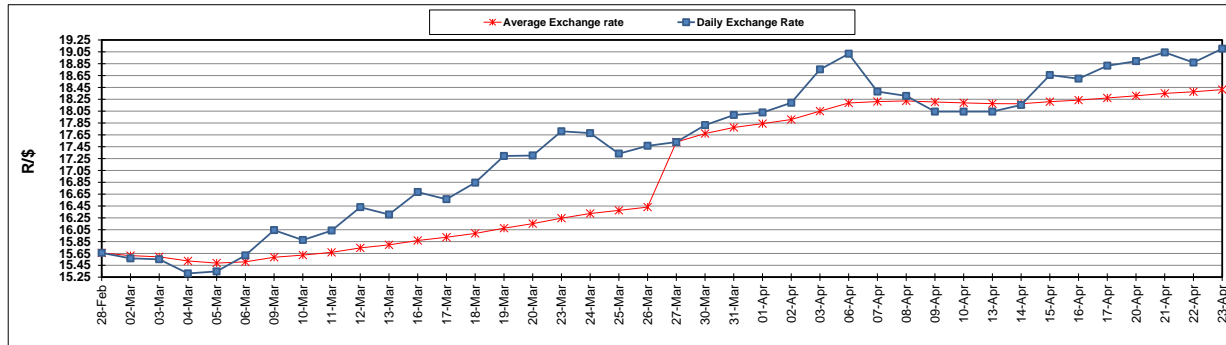
	PETROL 95 ULP	PETROL 93 ULP & LRP	DIESEL 0.05%	DIESEL 0.005%	ILL. PAR.
GAUTENG PUMP PRICE (SA c/l) AS FROM 01/04/2020	1,396.000	1,376.000	-	-	-
WHOLESALE PRICE (SA c/l) AS FROM 01/04/2020	-	-	1,269.560	1,273.960	672.828
SINGLE NATIONAL MAXIMUM RETAIL PRICE	-	-	-	-	840.000
BASIC FUEL PRICE - 23/04/2020 (SA c/l)	301.327	288.150	283.452	292.872	178.208
PRESS RELEASE CONTRIBUTION TO BFP 01/04/2020 - 23/04/2020 (SA c/l)	448.770	438.770	518.630	523.030	468.128
UNIT OVER/(UNDER) RECOVERY - 23/04/2020 (SA c/l)	147.443	150.620	235.178	230.158	289.920
AVERAGE BASIC FUEL PRICE 27/03/2020 - 23/04/2020	307.686	300.857	403.516	413.679	297.261
AVERAGE UNIT OVER/(UNDER) RECOVERY 27/03/2020 - 23/04/2020	173.964	168.993	139.864	134.251	200.567

### ANALYSIS MOVEMENT OF AVERAGE OVER/(UNDER) RECOVERY

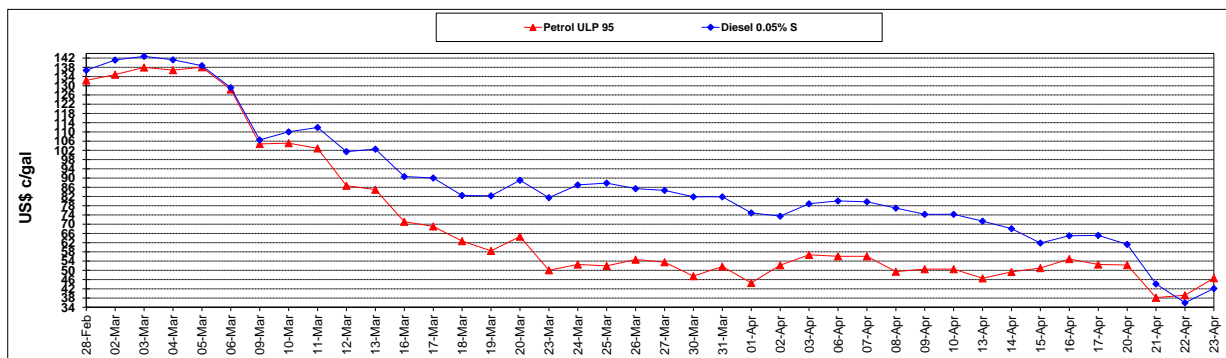
	PETROL 95	PETROL 93	DIESEL 0.05%	DIESEL 0.005%	ILL. PAR.
- MOVEMENT IN INTERNATIONAL PRODUCT PRICES	207.086	201.380	183.302	178.783	232.567
- MOVEMENT IN EXCHANGE RATE	(33.122)	(32.387)	(43.438)	(44.532)	(32.000)
AVERAGE UNIT OVER/(UNDER) RECOVERY 27/03/2020 - 23/04/2020	173.964	168.993	139.864	134.251	200.567

### R/\$ EXCHANGE RATE - (R/\$19.1020 - 23/04/2020)

#### EXCHANGE RATE USED IN BASIC FUEL PRICE



#### INTERNATIONAL PRODUCT PRICES OF BASKET USED IN BASIC FUEL PRICE



#### BASIC FUEL PRICE IN SA CENTS PER LITRE

