

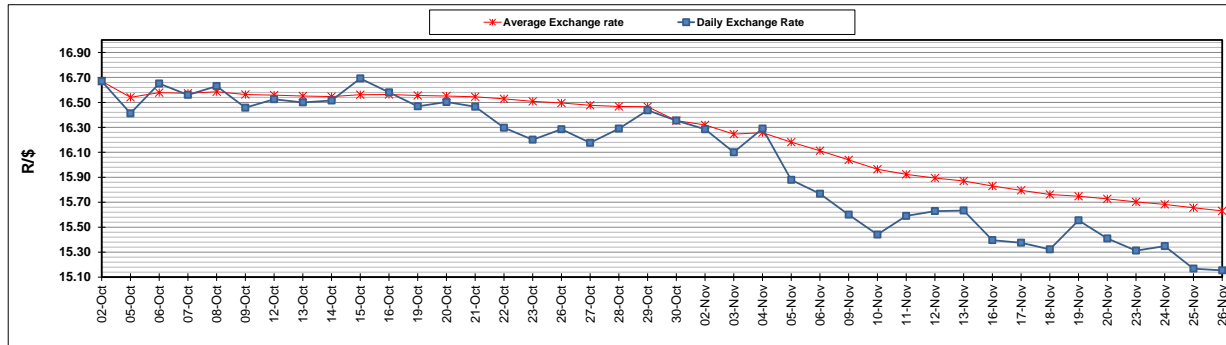
	PETROL 95 ULP	PETROL 93 ULP & LRP	DIESEL 0.05%	DIESEL 0.005%	ILL. PAR.
GAUTENG PUMP PRICE (SA c/l) AS FROM 04/11/2020	1,459.000	1,439.000	-	-	-
WHOLESALE PRICE (SA c/l) AS FROM 04/11/2020	-	-	1,225.560	1,227.960	655.828
SINGLE NATIONAL MAXIMUM RETAIL PRICE	-	-	-	-	818.000
BASIC FUEL PRICE - 26/11/2020 (SA c/l)	509.690	501.977	528.107	529.222	507.556
PRESS RELEASE CONTRIBUTION TO BFP 04/11/2020 - 26/11/2020 (SA c/l)	506.470	496.470	474.630	477.030	451.128
UNIT OVER/(UNDER) RECOVERY - 26/11/2020 (SA c/l)	(3.220)	(5.507)	(53.477)	(52.192)	(56.428)
AVERAGE BASIC FUEL PRICE 30/10/2020 - 26/11/2020	483.897	476.009	488.860	490.867	470.451
AVERAGE UNIT OVER/(UNDER) RECOVERY 30/10/2020 - 26/11/2020	26.623	24.511	(12.430)	(12.187)	(21.573)

ANALYSIS MOVEMENT OF AVERAGE OVER/(UNDER) RECOVERY

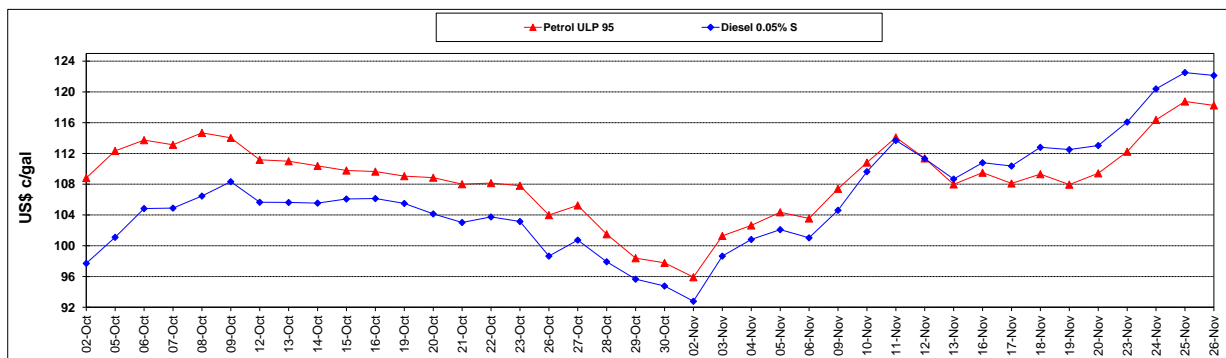
	PETROL 95	PETROL 93	DIESEL 0.05%	DIESEL 0.005%	ILL. PAR.
- MOVEMENT IN INTERNATIONAL PRODUCT PRICES	0.766	(0.924)	(38.552)	(38.416)	(46.711)
- MOVEMENT IN EXCHANGE RATE	25.857	25.435	26.122	26.229	25.138
AVERAGE UNIT OVER/(UNDER) RECOVERY 30/10/2020 - 26/11/2020	26.623	24.511	(12.430)	(12.187)	(21.573)

R/\$ EXCHANGE RATE - (R/\$15.1540 - 26/11/2020)

EXCHANGE RATE USED IN BASIC FUEL PRICE



INTERNATIONAL PRODUCT PRICES OF BASKET USED IN BASIC FUEL PRICE



BASIC FUEL PRICE IN SA CENTS PER LITRE

