

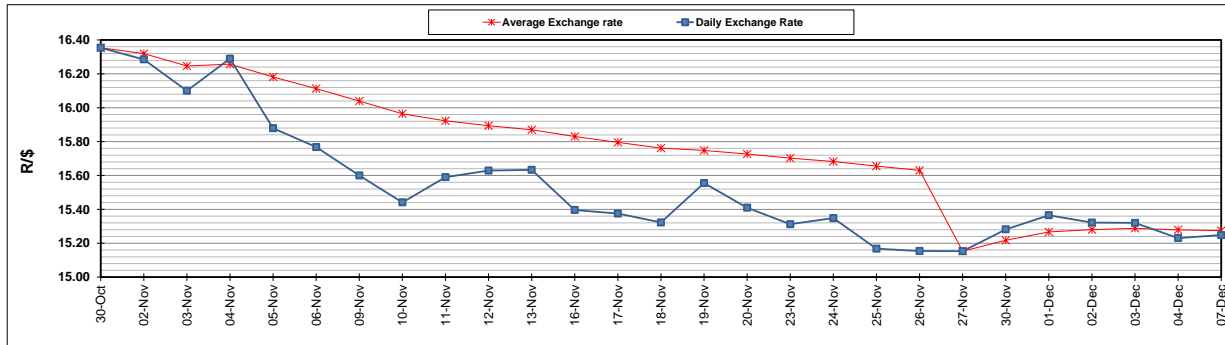
	PETROL 95 ULP	PETROL 93 ULP & LRP	DIESEL 0.05%	DIESEL 0.005%	ILL. PAR.
GAUTENG PUMP PRICE (SA c/l) AS FROM 02/12/2020	1,446.000	1,426.000	-	-	-
WHOLESALE PRICE (SA c/l) AS FROM 02/12/2020	-	-	1,245.420	1,247.820	684.688
SINGLE NATIONAL MAXIMUM RETAIL PRICE	-	-	-	-	856.000
BASIC FUEL PRICE - 07/12/2020 (SA c/l)	513.662	509.159	539.025	540.454	523.778
PRESS RELEASE CONTRIBUTION TO BFP 02/12/2020 - 07/12/2020 (SA c/l)	479.170	469.170	486.630	489.030	472.128
UNIT OVER/(UNDER) RECOVERY - 07/12/2020 (SA c/l)	(34.492)	(39.989)	(52.395)	(51.424)	(51.650)
AVERAGE BASIC FUEL PRICE 27/11/2020 - 07/12/2020	511.438	504.671	531.691	532.950	516.077
AVERAGE UNIT OVER/(UNDER) RECOVERY 27/11/2020 - 07/12/2020	(20.568)	(23.801)	(50.204)	(49.063)	(52.949)

ANALYSIS MOVEMENT OF AVERAGE OVER/(UNDER) RECOVERY

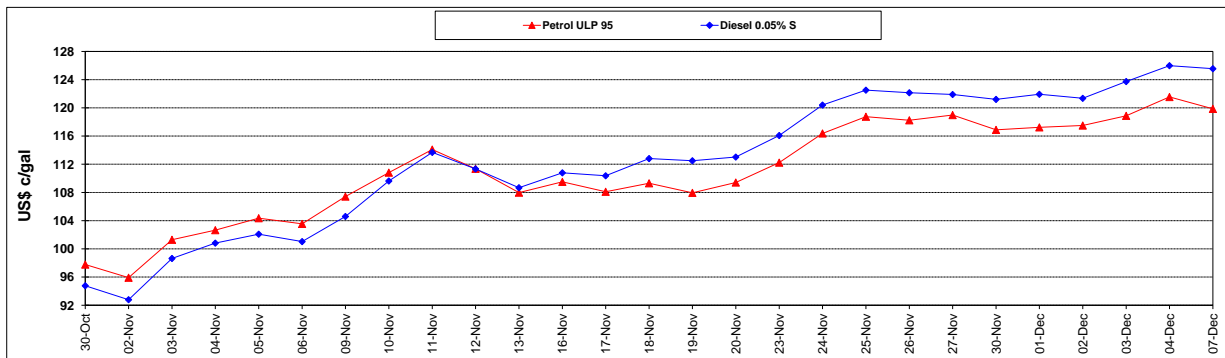
	PETROL 95	PETROL 93	DIESEL 0.05%	DIESEL 0.005%	ILL. PAR.
- MOVEMENT IN INTERNATIONAL PRODUCT PRICES	(32.491)	(35.567)	(62.600)	(61.488)	(64.981)
- MOVEMENT IN EXCHANGE RATE	11.923	11.766	12.396	12.425	12.032
AVERAGE UNIT OVER/(UNDER) RECOVERY 27/11/2020 - 07/12/2020	(20.568)	(23.801)	(50.204)	(49.063)	(52.949)

R/\$ EXCHANGE RATE - (R/\$15.2480 - 07/12/2020)

EXCHANGE RATE USED IN BASIC FUEL PRICE



INTERNATIONAL PRODUCT PRICES OF BASKET USED IN BASIC FUEL PRICE



BASIC FUEL PRICE IN SA CENTS PER LITRE

