

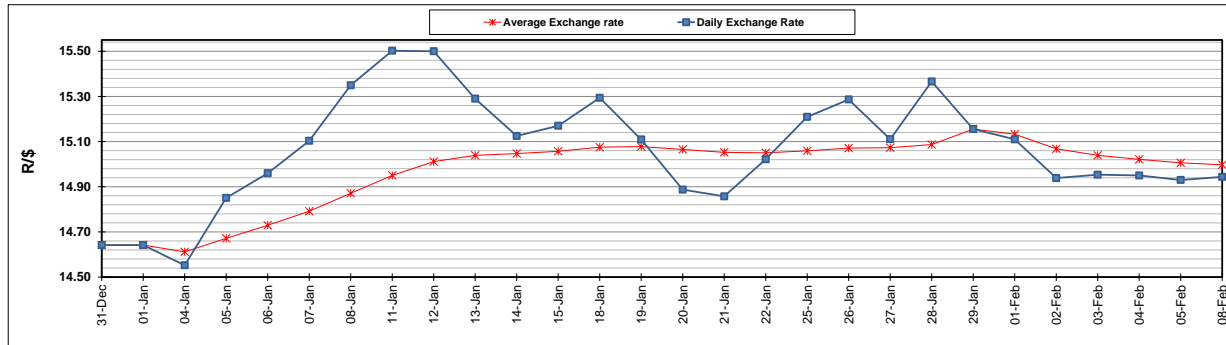
	PETROL 95 ULP	PETROL 93 ULP & LRP	DIESEL 0.05%	DIESEL 0.005%	ILL. PAR.
GAUTENG PUMP PRICE (SA c/l) AS FROM 03/02/2021	1,567.000	1,550.000	-	-	-
WHOLESALE PRICE (SA c/l) AS FROM 03/02/2021	-	-	1,358.420	1,360.820	798.688
SINGLE NATIONAL MAXIMUM RETAIL PRICE	-	-	-	-	1,008.000
BASIC FUEL PRICE - 08/02/2021 (SA c/l)	650.943	642.086	644.959	648.574	623.680
PRESS RELEASE CONTRIBUTION TO BFP 03/02/2021 - 08/02/2021 (SA c/l)	600.170	593.170	599.630	602.030	586.128
UNIT OVER/(UNDER) RECOVERY - 08/02/2021 (SA c/l)	(50.773)	(48.916)	(45.329)	(46.544)	(37.552)
AVERAGE BASIC FUEL PRICE 29/01/2021 - 08/02/2021	629.689	621.365	620.158	623.913	602.351
AVERAGE UNIT OVER/(UNDER) RECOVERY 29/01/2021 - 08/02/2021	(64.233)	(62.909)	(45.385)	(47.169)	(41.508)

### ANALYSIS MOVEMENT OF AVERAGE OVER/(UNDER) RECOVERY

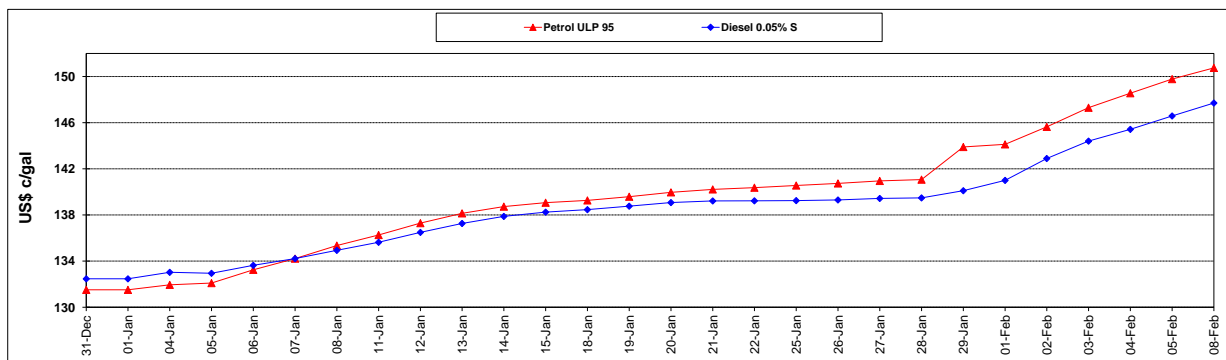
	PETROL 95	PETROL 93	DIESEL 0.05%	DIESEL 0.005%	ILL. PAR.
- MOVEMENT IN INTERNATIONAL PRODUCT PRICES	(68.008)	(66.634)	(49.102)	(50.909)	(45.120)
- MOVEMENT IN EXCHANGE RATE	3.775	3.725	3.717	3.740	3.611
AVERAGE UNIT OVER/(UNDER) RECOVERY 29/01/2021 - 08/02/2021	(64.233)	(62.909)	(45.385)	(47.169)	(41.508)

### R/\$ EXCHANGE RATE - (R/\$14.9438 - 08/02/2021)

#### EXCHANGE RATE USED IN BASIC FUEL PRICE



#### INTERNATIONAL PRODUCT PRICES OF BASKET USED IN BASIC FUEL PRICE



#### BASIC FUEL PRICE IN SA CENTS PER LITRE

