

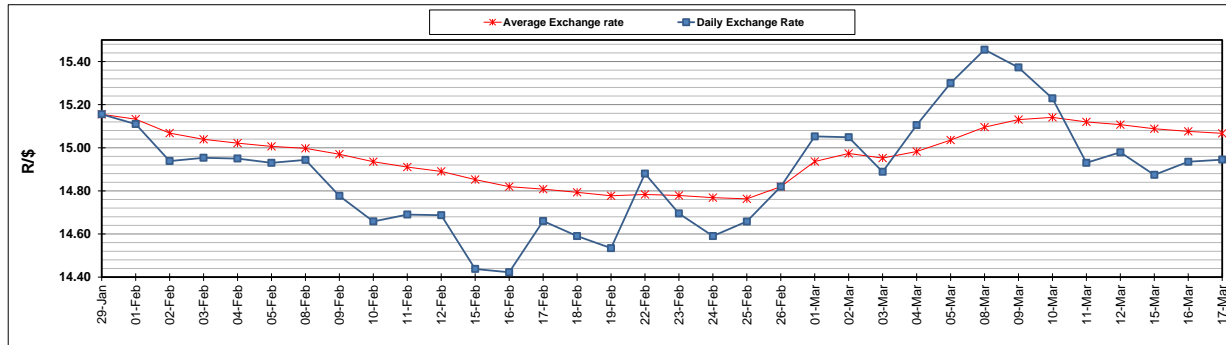
	PETROL 95 ULP	PETROL 93 ULP & LRP	DIESEL 0.05%	DIESEL 0.005%	ILL. PAR.
GAUTENG PUMP PRICE (SA c/l) AS FROM 03/03/2021	1,632.000	1,615.000	-	-	-
WHOLESALE PRICE (SA c/l) AS FROM 03/03/2021	-	-	1,412.420	1,416.820	845.688
SINGLE NATIONAL MAXIMUM RETAIL PRICE	-	-	-	-	1,071.000
BASIC FUEL PRICE - 17/03/2021 (SA c/l)	750.670	739.476	697.982	700.542	674.609
PRESS RELEASE CONTRIBUTION TO BFP 03/03/2021 - 17/03/2021 (SA c/l)	665.170	658.170	653.630	658.030	633.128
UNIT OVER/(UNDER) RECOVERY - 17/03/2021 (SA c/l)	(85.500)	(81.306)	(44.352)	(42.512)	(41.481)
AVERAGE BASIC FUEL PRICE 26/02/2021 - 17/03/2021	741.266	730.643	704.122	706.940	681.471
AVERAGE UNIT OVER/(UNDER) RECOVERY 26/02/2021 - 17/03/2021	(90.025)	(86.401)	(62.063)	(60.910)	(58.414)

ANALYSIS MOVEMENT OF AVERAGE OVER/(UNDER) RECOVERY

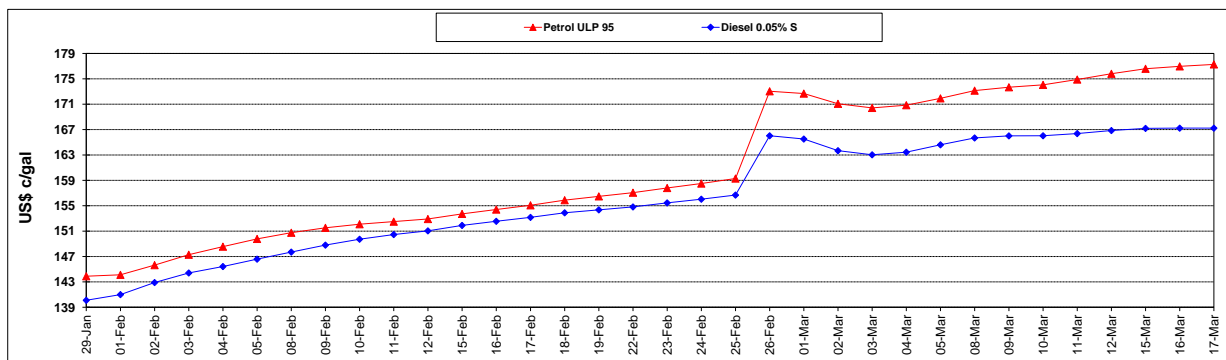
	PETROL 95	PETROL 93	DIESEL 0.05%	DIESEL 0.005%	ILL. PAR.
- MOVEMENT IN INTERNATIONAL PRODUCT PRICES	(75.083)	(71.675)	(47.870)	(46.660)	(44.678)
- MOVEMENT IN EXCHANGE RATE	(14.942)	(14.727)	(14.193)	(14.250)	(13.736)
AVERAGE UNIT OVER/(UNDER) RECOVERY 26/02/2021 - 17/03/2021	(90.025)	(86.401)	(62.063)	(60.910)	(58.414)

R/\$ EXCHANGE RATE - (R/\$14.9450 - 17/03/2021)

EXCHANGE RATE USED IN BASIC FUEL PRICE



INTERNATIONAL PRODUCT PRICES OF BASKET USED IN BASIC FUEL PRICE



BASIC FUEL PRICE IN SA CENTS PER LITRE

