

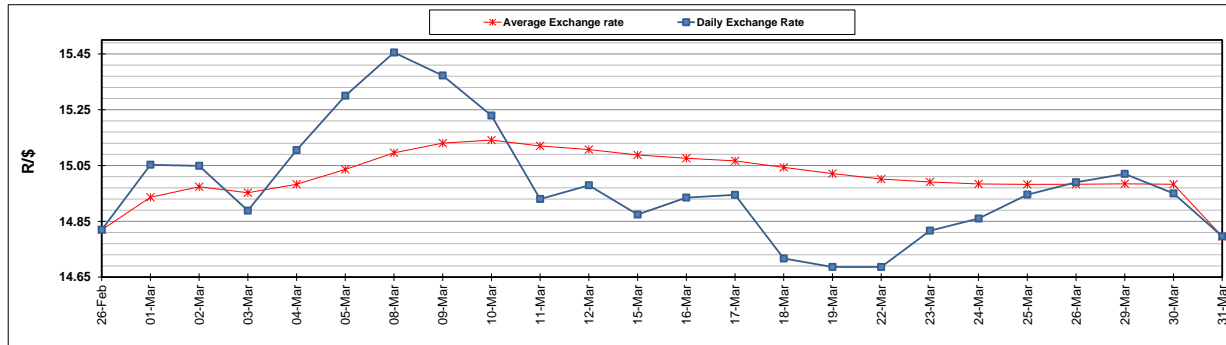
	PETROL 95 ULP	PETROL 93 ULP & LRP	DIESEL 0.05%	DIESEL 0.005%	ILL. PAR.
GAUTENG PUMP PRICE (SA c/l) AS FROM 07/04/2021	1,732.000	1,710.000	-	-	-
WHOLESALE PRICE (SA c/l) AS FROM 07/04/2021	-	-	1,477.620	1,480.020	880.488
SINGLE NATIONAL MAXIMUM RETAIL PRICE	-	-	-	-	1,106.000
BASIC FUEL PRICE - 31/03/2021 (SA c/l)	725.125	710.629	645.716	648.057	629.078
PRESS RELEASE CONTRIBUTION TO BFP 31/03/2021 - 31/03/2021 (SA c/l)	665.170	658.170	653.630	658.030	633.128
UNIT OVER/(UNDER) RECOVERY - 31/03/2021 (SA c/l)	(59.955)	(52.459)	7.914	9.973	4.050
AVERAGE BASIC FUEL PRICE 31/03/2021 - 31/03/2021	725.125	710.629	645.716	648.057	629.078
AVERAGE UNIT OVER/(UNDER) RECOVERY 31/03/2021 - 31/03/2021	(59.955)	(52.459)	7.914	9.973	4.050

### ANALYSIS MOVEMENT OF AVERAGE OVER/(UNDER) RECOVERY

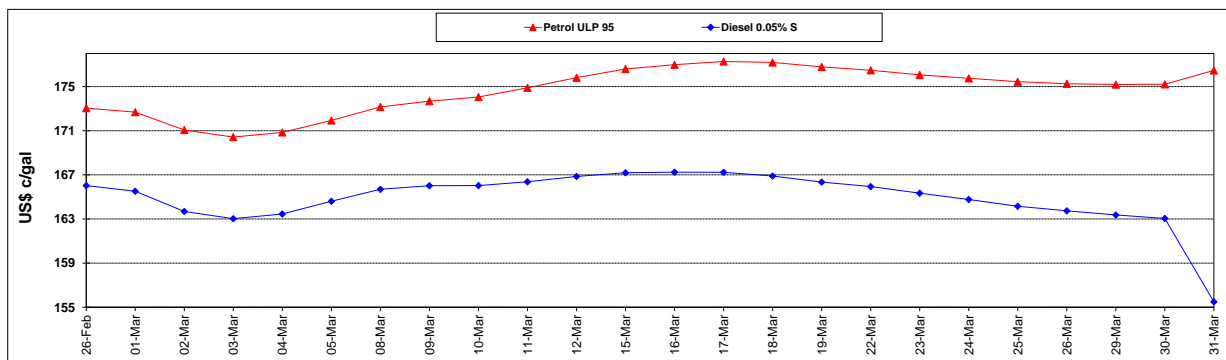
	PETROL 95	PETROL 93	DIESEL 0.05%	DIESEL 0.005%	ILL. PAR.
- MOVEMENT IN INTERNATIONAL PRODUCT PRICES	(69.115)	(61.436)	(0.243)	1.787	(3.896)
- MOVEMENT IN EXCHANGE RATE	9.160	8.977	8.157	8.186	7.946
AVERAGE UNIT OVER/(UNDER) RECOVERY 31/03/2021 - 31/03/2021	(59.955)	(52.459)	7.914	9.973	4.050

### R/\$ EXCHANGE RATE - (R/\$14.7960 - 31/03/2021)

#### EXCHANGE RATE USED IN BASIC FUEL PRICE



#### INTERNATIONAL PRODUCT PRICES OF BASKET USED IN BASIC FUEL PRICE



#### BASIC FUEL PRICE IN SA CENTS PER LITRE

