

	PETROL 95 ULP	PETROL 93 ULP & LRP	DIESEL 0.05%	DIESEL 0.005%	ILL. PAR.
GAUTENG PUMP PRICE (SA c/l) AS FROM 07/07/2021	1,739.000	1,720.000	-	-	-
WHOLESALE PRICE (SA c/l) AS FROM 07/07/2021	-	-	1,508.620	1,512.020	913.488
SINGLE NATIONAL MAXIMUM RETAIL PRICE	-	-	-	-	1,150.000
BASIC FUEL PRICE - 22/07/2021 (SA c/l)	811.576	798.295	755.028	757.785	737.231
PRESS RELEASE CONTRIBUTION TO BFP 07/07/2021 - 22/07/2021 (SA c/l)	743.170	734.170	721.630	725.030	700.128
UNIT OVER/(UNDER) RECOVERY - 22/07/2021 (SA c/l)	(68.406)	(64.125)	(33.398)	(32.755)	(37.103)
AVERAGE BASIC FUEL PRICE 02/07/2021 - 22/07/2021	814.145	800.835	757.950	760.703	737.416
AVERAGE UNIT OVER/(UNDER) RECOVERY 02/07/2021 - 22/07/2021	(76.175)	(72.465)	(44.720)	(43.873)	(44.488)

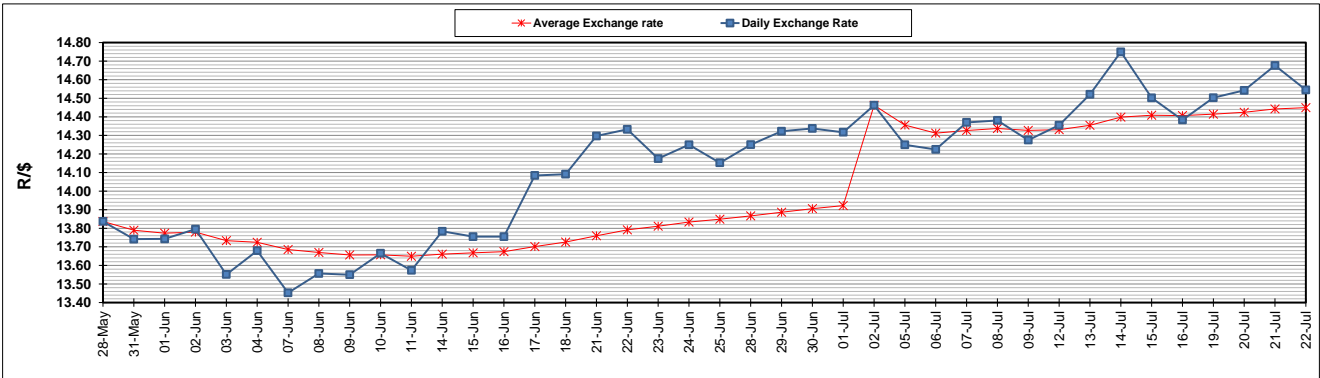
ANALYSIS MOVEMENT OF AVERAGE OVER/(UNDER) RECOVERY

- MOVEMENT IN INTERNATIONAL PRODUCT PRICES
- MOVEMENT IN EXCHANGE RATE
- AVERAGE UNIT OVER/(UNDER) RECOVERY 02/07/2021 - 22/07/2021

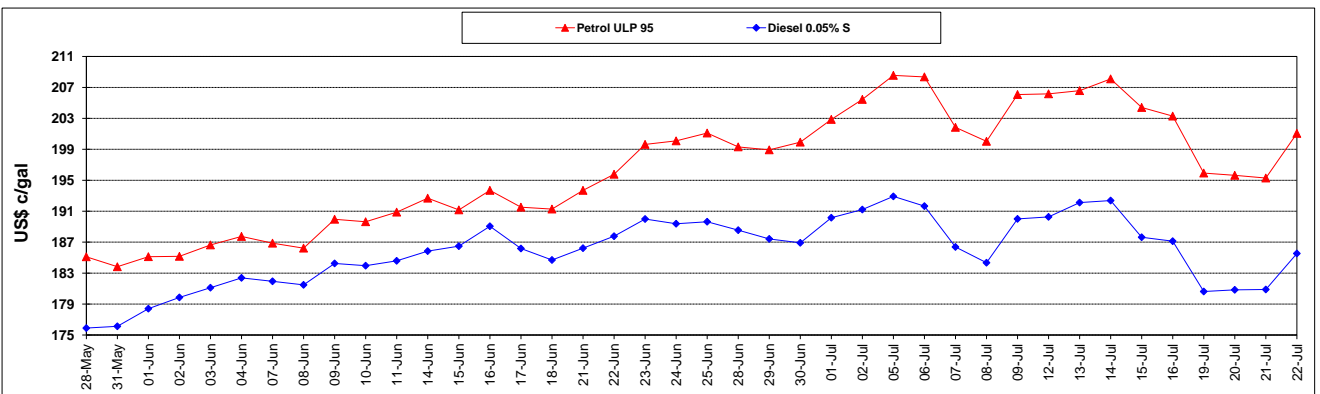
PETROL 95	PETROL 93	DIESEL 0.05%	DIESEL 0.005%	ILL. PAR.
(46.453)	(43.229)	(17.050)	(16.102)	(17.567)
(29.722)	(29.236)	(27.670)	(27.771)	(26.921)
(76.175)	(72.465)	(44.720)	(43.873)	(44.488)

R/\$ EXCHANGE RATE - (R/\$14.5450- 22/07/2021)

EXCHANGE RATE USED IN BASIC FUEL PRICE



INTERNATIONAL PRODUCT PRICES OF BASKET USED IN BASIC FUEL PRICE



BASIC FUEL PRICE IN SA CENTS PER LITRE

