

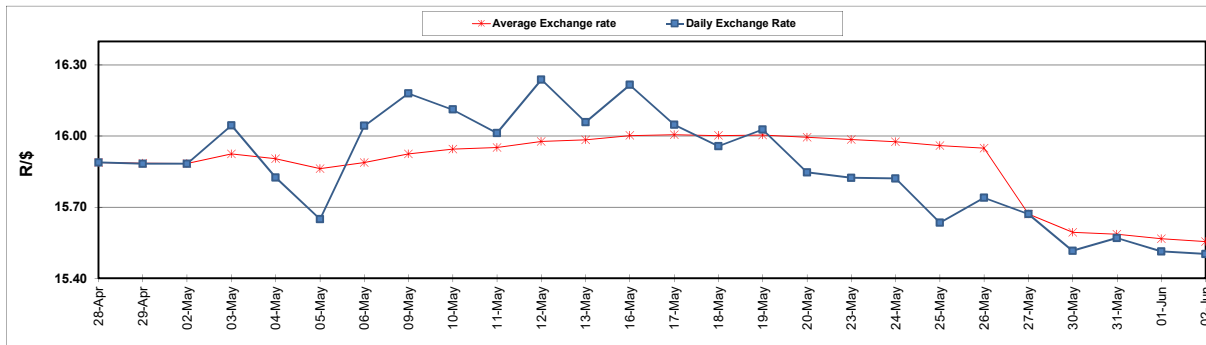
	PETROL 95 ULP	PETROL 93 ULP & LRP	DIESEL 0.05%	DIESEL 0.005%	ILL. PAR.
GAUTENG PUMP PRICE (SA c/l) AS FROM 01/06/2022	2,417.000	2,394.000	-	-	-
WHOLESALE PRICE (SA c/l) AS FROM 01/06/2022	-	-	2,309.440	2,322.840	1,820.288
SINGLE NATIONAL MAXIMUM RETAIL PRICE	-	-	-	-	2,402.000
BASIC FUEL PRICE - 02/06/2022 (SA c/l)	1,621.007	1,596.798	1,661.816	1,674.859	1,665.562
PRESS RELEASE CONTRIBUTION TO BFP 01/06/2022 - 02/06/2022 (SA c/l)	1,507.410	1,484.410	1,607.630	1,621.030	1,602.128
UNIT OVER/(UNDER) RECOVERY - 02/06/2022 (SA c/l)	(113.597)	(112.388)	(54.186)	(53.829)	(63.434)
AVERAGE BASIC FUEL PRICE 27/05/2022 - 02/06/2022	1,632.087	1,589.779	1,628.665	1,641.838	1,640.814
AVERAGE UNIT OVER/(UNDER) RECOVERY 27/05/2022 - 02/06/2022	(270.477)	(251.169)	(87.035)	(85.008)	(132.286)

### ANALYSIS MOVEMENT OF AVERAGE OVER/(UNDER) RECOVERY

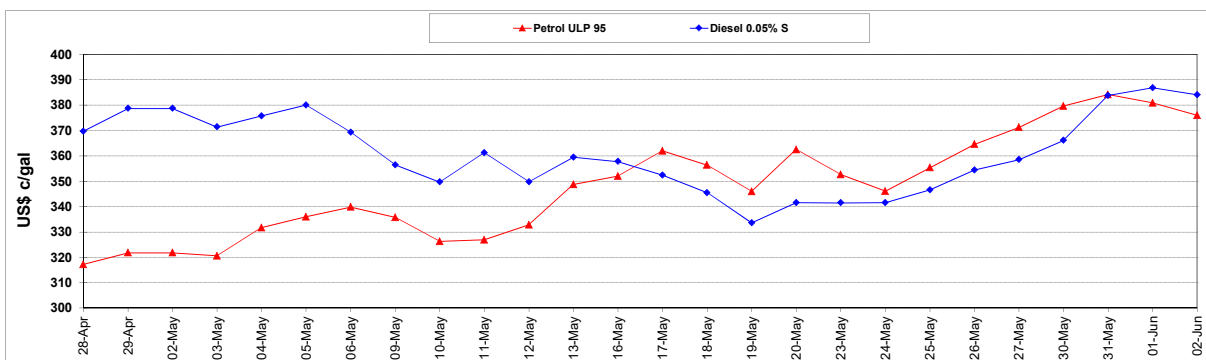
	PETROL 95	PETROL 93	DIESEL 0.05%	DIESEL 0.005%	ILL. PAR.
- MOVEMENT IN INTERNATIONAL PRODUCT PRICES	(311.881)	(291.500)	(128.352)	(126.660)	(173.912)
- MOVEMENT IN EXCHANGE RATE	41.404	40.331	41.317	41.652	41.626
AVERAGE UNIT OVER/(UNDER) RECOVERY 27/05/2022 - 02/06/2022	(270.477)	(251.169)	(87.035)	(85.008)	(132.286)

### R/\$ EXCHANGE RATE - (R/\$15.5025 - 02/06/2022)

#### EXCHANGE RATE USED IN BASIC FUEL PRICE



#### INTERNATIONAL PRODUCT PRICES OF BASKET USED IN BASIC FUEL PRICE



#### BASIC FUEL PRICE IN SA CENTS PER LITRE

