

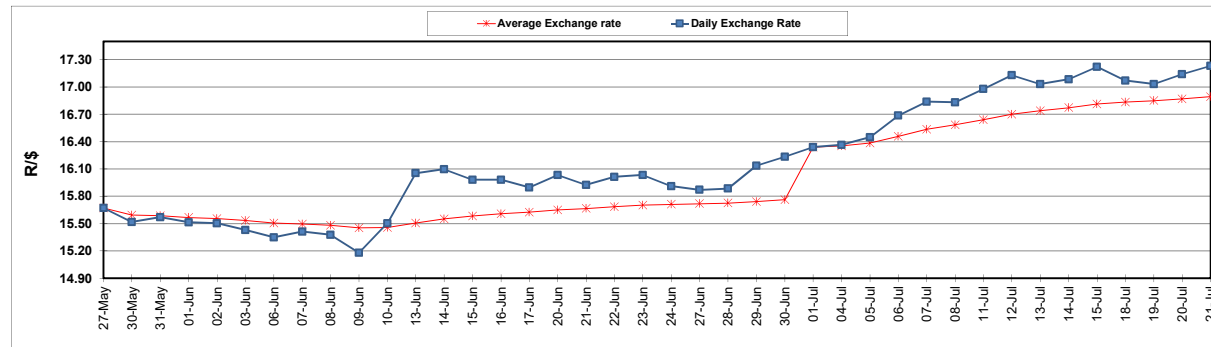
	PETROL 95 ULP	PETROL 93 ULP & LRP	DIESEL 0.05%	DIESEL 0.005%	ILL. PAR.
GAUTENG PUMP PRICE (SA c/l) AS FROM 06/07/2022	2,674.000	2,631.000	-	-	-
WHOLESALE PRICE (SA c/l) AS FROM 06/07/2022	-	-	2,540.440	2,552.840	1,986.288
SINGLE NATIONAL MAXIMUM RETAIL PRICE	-	-	-	-	2,623.000
BASIC FUEL PRICE - 21/07/2022 (SA c/l)	1,339.335	1,314.236	1,490.874	1,494.506	1,549.588
PRESS RELEASE CONTRIBUTION TO BFP 06/07/2022 - 21/07/2022 (SA c/l)	1,689.410	1,646.410	1,763.630	1,776.030	1,768.128
UNIT OVER/(UNDER) RECOVERY - 01/07/2022 (SA c/l)	350.075	332.174	272.756	281.524	218.540
AVERAGE BASIC FUEL PRICE 01/07/2022 - 21/07/2022	1,487.941	1,447.865	1,602.518	1,612.039	1,614.550
AVERAGE UNIT OVER/(UNDER) RECOVERY 01/07/2022 - 21/07/2022	165.069	166.145	129.912	132.991	120.378

### ANALYSIS MOVEMENT OF AVERAGE OVER/(UNDER) RECOVERY

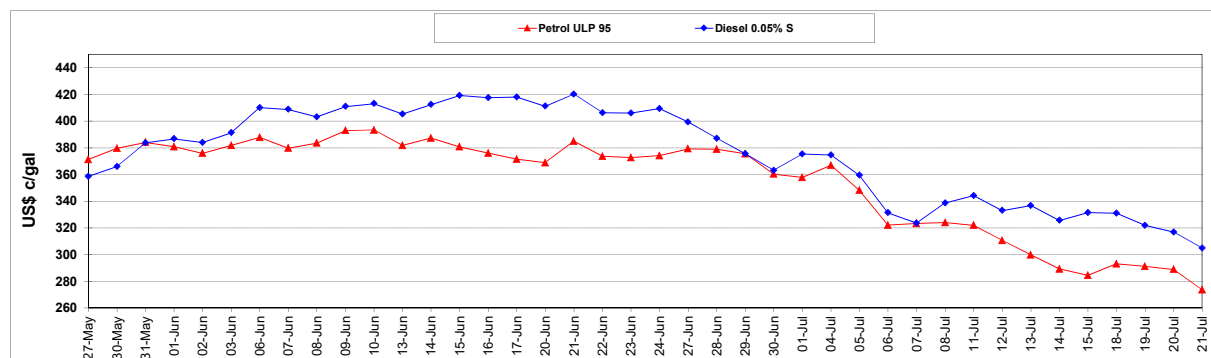
	PETROL 95	PETROL 93	DIESEL 0.05%	DIESEL 0.005%	ILL. PAR.
- MOVEMENT IN INTERNATIONAL PRODUCT PRICES	264.727	263.118	237.244	240.960	228.515
- MOVEMENT IN EXCHANGE RATE	(99.658)	(96.973)	(107.332)	(107.969)	(108.137)
AVERAGE UNIT OVER/(UNDER) RECOVERY 01/07/2022 - 21/07/2022	165.069	166.145	129.912	132.991	120.378

**R/\$ EXCHANGE RATE - (R/\$17.2300 - 21/07/2022)**

### EXCHANGE RATE USED IN BASIC FUEL PRICE



### INTERNATIONAL PRODUCT PRICES OF BASKET USED IN BASIC FUEL PRICE



### BASIC FUEL PRICE IN SA CENTS PER LITRE

