

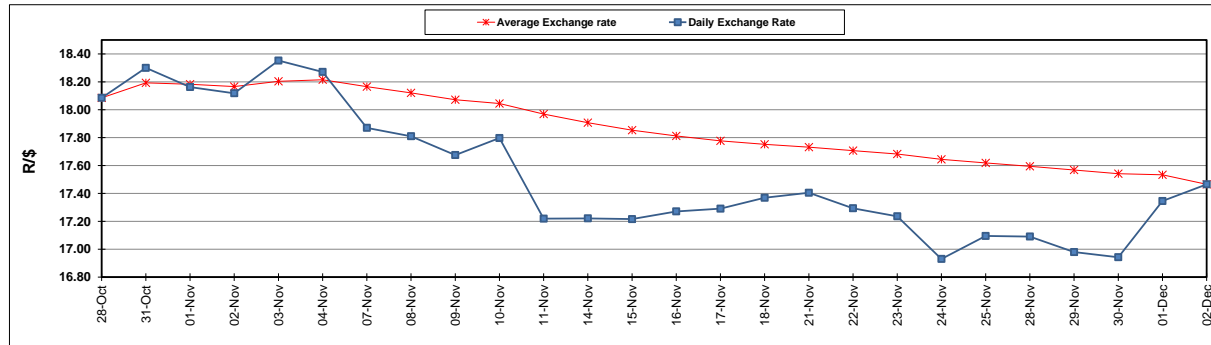
	PETROL 95 ULP	PETROL 93 ULP & LRP	DIESEL 0.05%	DIESEL 0.005%	ILL. PAR.
GAUTENG PUMP PRICE (SA c/l) AS FROM 07/12/2022	2,346.000	2,316.000	-	-	-
WHOLESALE PRICE (SA c/l) AS FROM 07/12/2022	-	-	2,391.770	2,422.170	1,718.958
SINGLE NATIONAL MAXIMUM RETAIL PRICE	-	-	-	-	2,267.000
BASIC FUEL PRICE - 02/12/2022 (SA c/l)	1,108.450	1,080.482	1,372.152	1,394.244	1,405.048
PRESS RELEASE CONTRIBUTION TO BFP 02/12/2022 - 02/12/2022 (SA c/l)	1,209.890	1,179.890	1,679.630	1,705.030	1,558.128
UNIT OVER/(UNDER) RECOVERY - 02/12/2022 (SA c/l)	101.440	99.408	307.478	310.786	153.080
AVERAGE BASIC FUEL PRICE 02/12/2022 - 02/12/2022	1,108.450	1,080.482	1,372.152	1,394.244	1,405.048
AVERAGE UNIT OVER/(UNDER) RECOVERY 02/12/2022 - 02/12/2022	101.440	99.408	307.478	310.786	153.080

ANALYSIS MOVEMENT OF AVERAGE OVER/(UNDER) RECOVERY

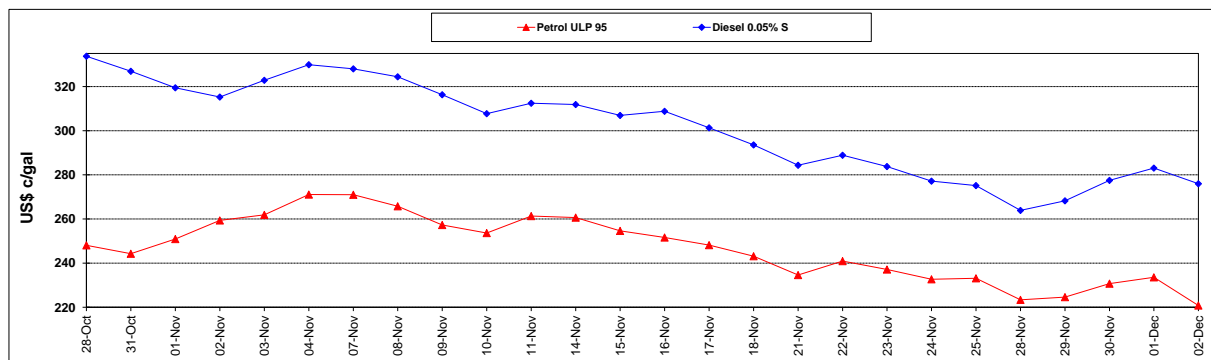
	PETROL 95	PETROL 93	DIESEL 0.05%	DIESEL 0.005%	ILL. PAR.
- MOVEMENT IN INTERNATIONAL PRODUCT PRICES	97.093	95.170	302.096	305.318	147.569
- MOVEMENT IN EXCHANGE RATE	4.347	4.238	5.382	5.468	5.511
AVERAGE UNIT OVER/(UNDER) RECOVERY 02/12/2022 - 02/12/2022	101.440	99.408	307.478	310.786	153.080

R/\$ EXCHANGE RATE - (R/\$17.4653 - 02/12/2022)

EXCHANGE RATE USED IN BASIC FUEL PRICE



INTERNATIONAL PRODUCT PRICES OF BASKET USED IN BASIC FUEL PRICE



BASIC FUEL PRICE IN SA CENTS PER LITRE

