

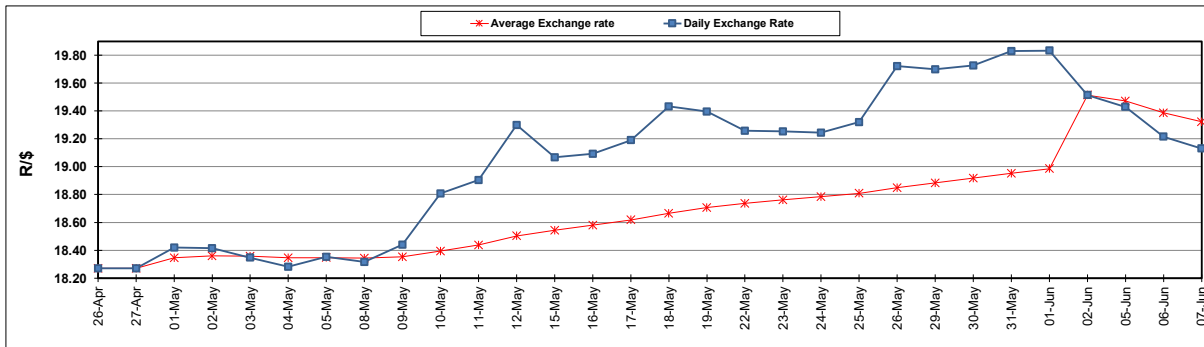
South African Cents per Litre (SA c/l)	PETROL 95 ULP	PETROL 93 ULP & LRP	DIESEL 0.05%	DIESEL 0.005%	ILL. PAR.
GAUTENG PUMP PRICE AS FROM 07/06/2023	2,263.000	2,230.000	-	-	-
WHOLESALE PRICE AS FROM 07/06/2023	-	-	1,931.290	1,969.690	1,396.058
SINGLE NATIONAL MAXIMUM RETAIL PRICE	-	-	-	-	1,801.000
BASIC FUEL PRICE - 07/06/2023	1,263.524	1,223.983	1,173.738	1,205.115	1,191.060
PRESS RELEASE CONTRIBUTION TO BFP 07/06/2023 - 07/06/2023	1,225.970	1,192.970	1,122.630	1,161.030	1,163.128
UNIT OVER/(UNDER) RECOVERY - 07/06/2023	(37.554)	(31.013)	(51.108)	(44.085)	(27.932)
AVERAGE BASIC FUEL PRICE 02/06/2023 - 07/06/2023	1,265.542	1,221.559	1,177.745	1,210.770	1,192.800
AVERAGE UNIT OVER/(UNDER) RECOVERY 02/06/2023 - 07/06/2023	12.928	23.911	7.135	9.510	2.578

### ANALYSIS MOVEMENT OF AVERAGE OVER/(UNDER) RECOVERY

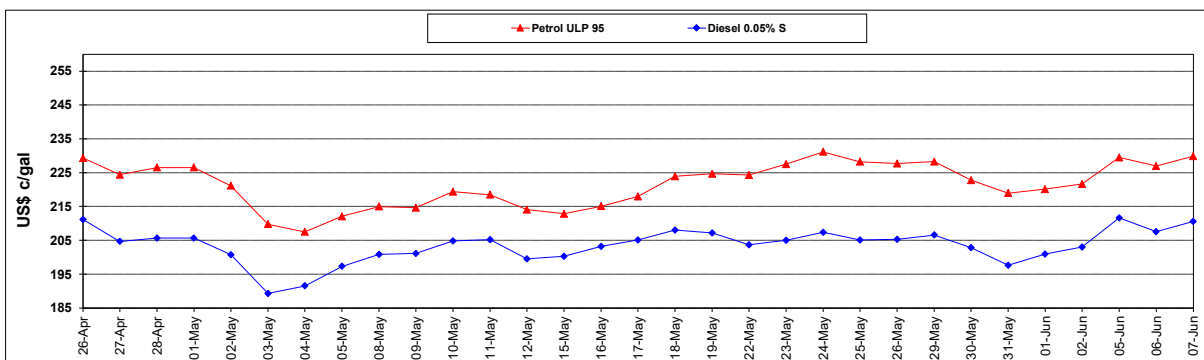
	PETROL 95	PETROL 93	DIESEL 0.05%	DIESEL 0.005%	ILL. PAR.
- MOVEMENT IN INTERNATIONAL PRODUCT PRICES	34.962	45.179	27.640	30.590	23.345
- MOVEMENT IN EXCHANGE RATE	(22.034)	(21.268)	(20.505)	(21.080)	(20.767)
AVERAGE UNIT OVER/(UNDER) RECOVERY 02/06/2023 - 07/06/2023	12.928	23.911	7.135	9.510	2.578

### R/\$ EXCHANGE RATE - (R/\$19.1303 - 07/06/2023)

#### EXCHANGE RATE USED IN BASIC FUEL PRICE



#### INTERNATIONAL PRODUCT PRICES OF BASKET USED IN BASIC FUEL PRICE



#### BASIC FUEL PRICE IN SA CENTS PER LITRE

