

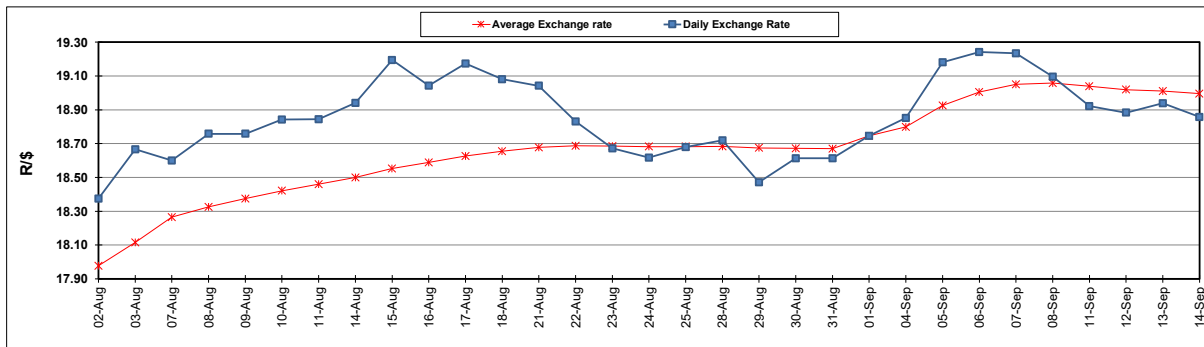
South African Cents per Litre (SA c/l)	PETROL 95 ULP	PETROL 93 ULP & LRP	DIESEL 0.05%	DIESEL 0.005%	ILL. PAR.
GAUTENG PUMP PRICE AS FROM 06/09/2023	2,454.000	2,414.000	-	-	-
WHOLESALE PRICE AS FROM 06/09/2023	-	-	2,305.290	2,328.690	1,741.058
SINGLE NATIONAL MAXIMUM RETAIL PRICE	-	-	-	-	2,261.000
BASIC FUEL PRICE - 14/09/2023	1,533.442	1,481.574	1,670.481	1,695.329	1,659.656
PRESS RELEASE CONTRIBUTION TO BFP 06/09/2023 - 14/09/2023	1,411.970	1,371.970	1,496.630	1,520.030	1,508.128
UNIT OVER/(UNDER) RECOVERY - 14/09/2023	(121.472)	(109.604)	(173.851)	(175.299)	(151.528)
AVERAGE BASIC FUEL PRICE 01/09/2023 - 14/09/2023	1,483.902	1,436.676	1,614.895	1,630.186	1,611.637
AVERAGE UNIT OVER/(UNDER) RECOVERY 01/09/2023 - 14/09/2023	(121.732)	(114.506)	(203.465)	(192.956)	(186.909)

ANALYSIS MOVEMENT OF AVERAGE OVER/(UNDER) RECOVERY

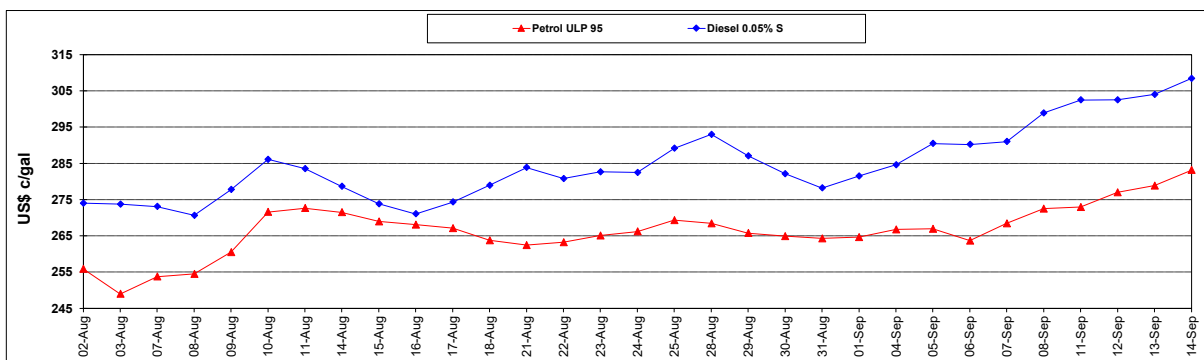
	PETROL 95	PETROL 93	DIESEL 0.05%	DIESEL 0.005%	ILL. PAR.
- MOVEMENT IN INTERNATIONAL PRODUCT PRICES	(96.577)	(90.152)	(176.090)	(165.322)	(159.589)
- MOVEMENT IN EXCHANGE RATE	(25.155)	(24.354)	(27.375)	(27.634)	(27.320)
AVERAGE UNIT OVER/(UNDER) RECOVERY 01/09/2023 - 14/09/2023	(121.732)	(114.506)	(203.465)	(192.956)	(186.909)

R/\$ EXCHANGE RATE - (R/\$18.8580 - 14/09/2023)

EXCHANGE RATE USED IN BASIC FUEL PRICE



INTERNATIONAL PRODUCT PRICES OF BASKET USED IN BASIC FUEL PRICE



BASIC FUEL PRICE IN SA CENTS PER LITRE

