

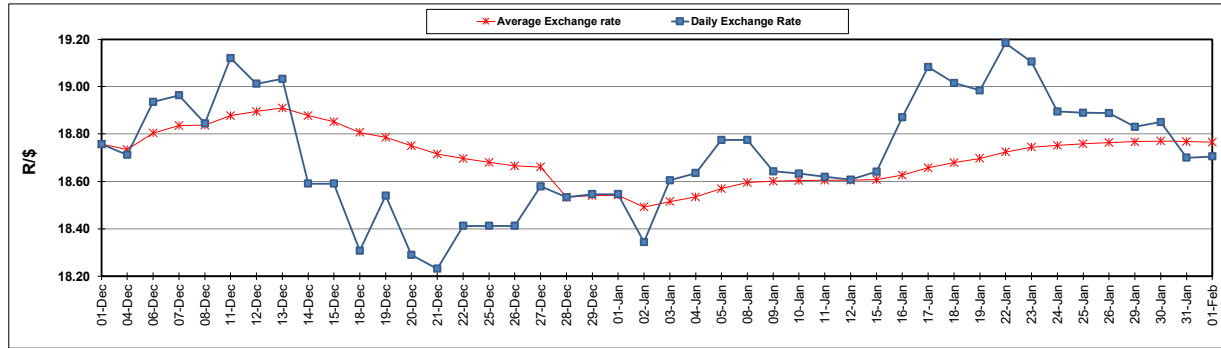
| South African Cents per Litre (SA c/l) | PETROL 95 ULP | PETROL 93 ULP & LRP | DIESEL 0.05% | DIESEL 0.005% | ILL. PAR. |
|--|---------------|---------------------|--------------|---------------|-----------|
| GAUTENG PUMP PRICE AS FROM 03/01/2024 | 2,249.000 | 2,217.000 | - | - | - |
| WHOLESALE PRICE AS FROM 03/01/2024 | - | - | 2,063.170 | 2,072.570 | 1,530.938 |
| SINGLE NATIONAL MAXIMUM RETAIL PRICE | - | - | - | - | 1,981.000 |
| BASIC FUEL PRICE - 01/02/2024 | 1,324.468 | 1,287.867 | 1,435.056 | 1,450.017 | 1,421.263 |
| PRESS RELEASE CONTRIBUTION TO BFP 03/01/2024 - 01/02/2024 | 1,146.870 | 1,114.870 | 1,240.630 | 1,250.030 | 1,284.128 |
| UNIT OVER/(UNDER) RECOVERY - 01/02/2024 | (177.598) | (172.997) | (194.426) | (199.987) | (137.135) |
| AVERAGE BASIC FUEL PRICE 28/12/2023 - 01/02/2024 | 1,229.878 | 1,192.728 | 1,328.217 | 1,335.544 | 1,352.149 |
| AVERAGE UNIT OVER/(UNDER) RECOVERY 28/12/2023 - 01/02/2024 | (75.365) | (72.369) | (73.433) | (70.129) | (53.713) |

ANALYSIS MOVEMENT OF AVERAGE OVER/(UNDER) RECOVERY

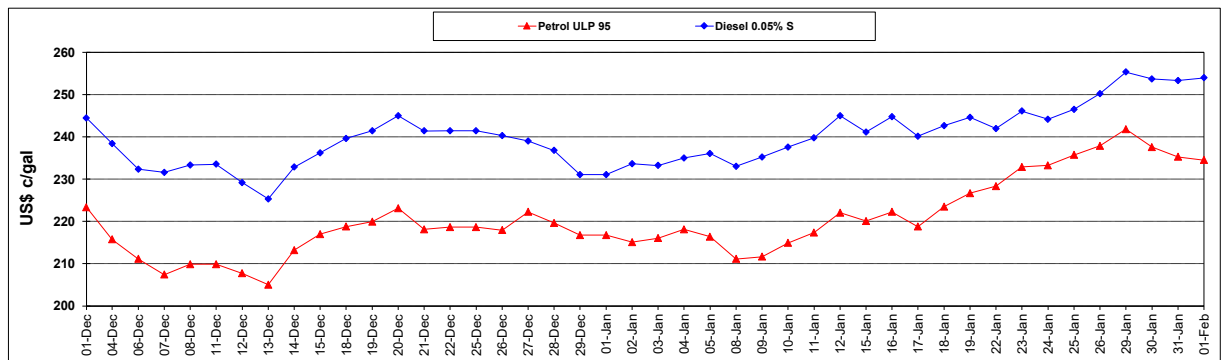
| | PETROL 95 | PETROL 93 | DIESEL 0.05% | DIESEL 0.005% | ILL. PAR. |
|--|-----------|-----------|--------------|---------------|-----------|
| - MOVEMENT IN INTERNATIONAL PRODUCT PRICES | (68.503) | (65.714) | (66.022) | (62.677) | (46.169) |
| - MOVEMENT IN EXCHANGE RATE | (6.862) | (6.655) | (7.411) | (7.452) | (7.544) |
| AVERAGE UNIT OVER/(UNDER) RECOVERY 28/12/2023 - 01/02/2024 | (75.365) | (72.369) | (73.433) | (70.129) | (53.713) |

R/\$ EXCHANGE RATE - (R/\$18.7053 - 01/02/2024)

EXCHANGE RATE USED IN BASIC FUEL PRICE



INTERNATIONAL PRODUCT PRICES OF BASKET USED IN BASIC FUEL PRICE



BASIC FUEL PRICE IN SA CENTS PER LITRE

